

# PHIL STARKE FINE ARTIST

## “Making the Landscape Simple” with Phil Starke

April 22-24, 2025  
3 Day Workshop  
9:00 – 4:00 PM CT  
Petal & Patch Barn

**\$525**

Hoosier Art Salon members use **2025PSWS**

Phil Starke’s workshop is for beginning plein air painters.

### **Class Description:**

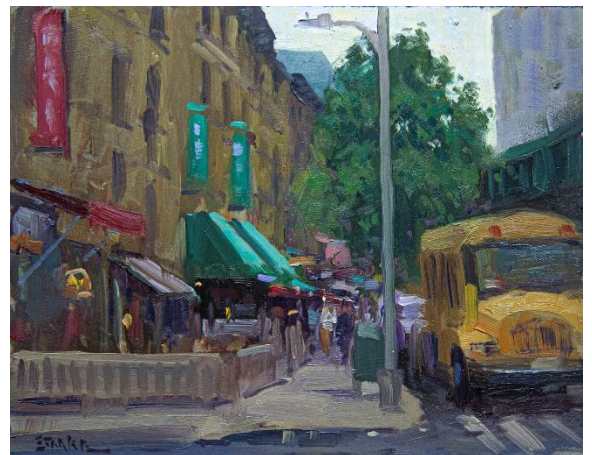
Phil Starke’s 3-day workshop will focus on simplifying the main aspects of painting landscapes, that we should “see” as an artist, not as a camera. Students will learn how to simplify the subject to large masses and simple values and eliminate the need for too much detail. We will also learn how to use the color wheel to mix colors easily, suggest the light, and show form.

I will present a slide show suggesting how to study paintings and focusing on landscape painters from the past.

Phil will demonstrate 3 pieces during the workshop (about an hour each) and work one-on-one with students. We will be painting from photographs provided by Phil or you are welcome to bring your own, and possibly outside as students are comfortable.

### **Phil Starke Biography**

Phil grew up in a military family where he spent several years in Europe and was influenced by the museums and artwork that he was exposed to. He attended the American Academy of Art in Chicago where he studied figure painting and drawing. After living and painting in the Midwest for several years he and his family moved to Tucson AZ. The southwest, along with Montana, Wyoming, and Colorado were a great inspiration for his painting. Towards the end of 2019, Phil and his wife moved to Georgia where he is exploring and painting the small towns in the Blue Ridge Mountains and on the coast. Phil is a member of Plein Air Painters of America, Southeast Plein Air Painters, and California Art Club.



### **Galleries to find Phil’s art:**

Oh Be Joyful Gallery, Crested Butte, Co  
Settlers West Gallery, Tucson, AZ  
Big Horn Gallery, Tubac, AZ  
Cody WY Artzline Online Gallery

## Class Supply List (Student Responsible):

### OILS-

- Titanium White
- Cadmium yellow light
- Yellow ochre
- Cadmium orange
- Cadmium red medium (or naphthol red)
- Burnt sienna
- Alizarin crimson
- Dioxazine purple
- Ultramarine blue
- Viridian
- Pthalo blue or cerulean blue



### BRUSHES-

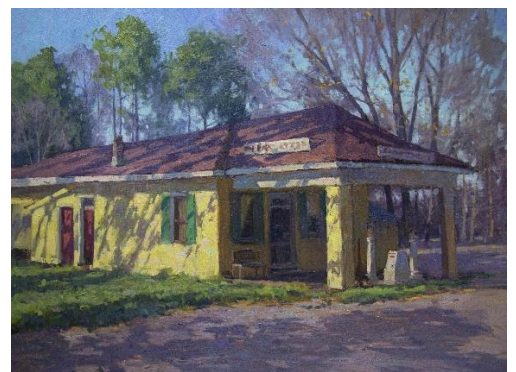
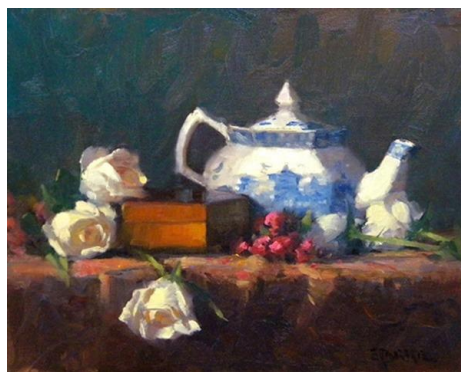
- White oil bristle brushes and/or synthetic brushes
- Filberts or flats - # 2,4,6,8 **OR**
- Synthetic brushes #2,4,6,8
- A small round oil or synthetic brush #6 or #8

### OTHER SUPPLIES

- Palette- 12x16, paper or wooden
- Medium and small, long painting knife
- Paper towels
- Paint thinner- Gamsol or some art related paint thinner, not hardware store paint thinner.
- Small Sketch Book 5.5 x 8.5 or bigger
- Drawing Pencils, 4b or 6b, kneaded eraser

**CANVAS BOARD-** A mixture of these sizes: 6x8, 8x10, 9x12, 11x14 - **10 panels total.**

### OUTDOOR EASEL



## **New Harmony Lodging**

### **New Harmony Inn**

504 North St, New Harmony, IN 47631

(812) 682-4431

<https://newharmonyinn.com/>

---

A block of rooms has been put on reserve for students during Monday – Thursday, April 21-24, 2025.

### **AC Thomas House Bed & Breakfast Inn**

503 West St, New Harmony, IN 47631

(812) 682-6110

<https://acthomashouse.com/>

---

### **Ludwig Epple Guest House**

520 Granary St, New Harmony, IN 47631

(812) 682-5090

<https://newharmonyguesthouse.com/>

---

### **Leather Leaf Inn**

531 North St, New Harmony, IN 47631

(812) 682-6106

<https://leatherleafinn.com/>

---

### **Granary Street Guest House**

702 Granary St, New Harmony, IN 47631

(812) 682-3310

---

### **The Old Rooming House**

916 Church St, New Harmony, IN 47631

(812) 781-9218

<https://www.oldroominghouse.com/index.html>

## 2025 New Harmony Restaurants – Central Time Zone

### Red Geranium Restaurant

520 North St, New Harmony, IN 47631  
(812) 682-6171

<https://newharmonyinn.com/dining/dining-menus/>

#### Hours:

Sunday	9:00 am – 2:00 pm
Monday & Tuesday	Closed
Wednesday - Friday	11:00 am – 8:00 pm
Saturday	9:00 am – 8:00 pm

### American Legion Post 370

516 Church St, New Harmony, IN 47631  
(812) 682-3873

#### Hours:

Sunday - Tuesday Closed  
Wednesday - Saturday 11:00 am – 9:00 pm

### Say's Restaurant

500 Church St, New Harmony, IN 47631  
(812) 270-4183

#### Hours:

Sunday	11:00 am – 7:00 pm
Monday - Thursday	Closed
Friday	11:00 am – 2:00 pm, 5:00 pm – 8:00 pm
Saturday	11:00 am – 8:00 pm

### Sara's Wine Bar

500 Church St, New Harmony, IN 47631  
<https://saraswinebar.com/>

#### Hours:

Sunday	11:00 am – 7:00 pm
Monday - Wednesday	Closed
Friday - Saturday	11:00 am – 10:00 pm

### The Main Café

508 Main St, New Harmony, IN 47631  
(812) 682-3370

#### Hours:

Sunday	Closed
Monday - Saturday	6:00 am – 2:00 pm

### Fire&Ice

606b Main St, New Harmony, IN 47631

#### Hours:

By Announcement

### Yellow Tavern

521 Church St, New Harmony, IN 47631  
(812) 682-3303

#### Hours:

Sunday	Closed
Monday - Thursday	11:00 am – 9:00 pm
Friday – Saturday	11:00 am – 10:00 pm

### Black Lodge Coffee Roasters

610 Church St, New Harmony, IN 47631  
(812) 682-2449

<https://www.blacklodge.coffee/>

#### Hours:

Sunday	8:00 am – 1:00 pm
Tuesday	8:00 am – 3:00 pm
Wednesday	Closed
Thursday - Saturday	8:00 am – 3:00 pm